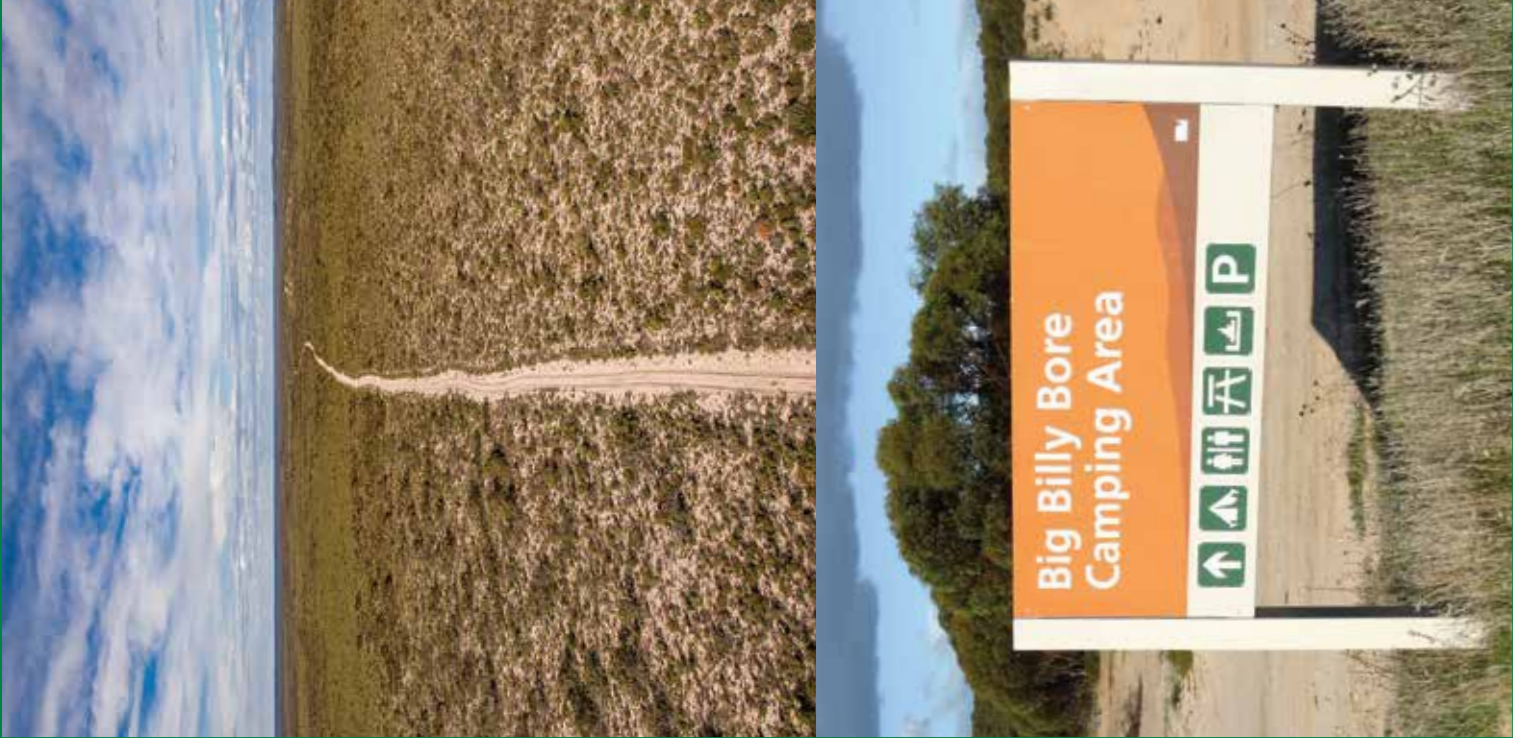


Big Desert State Forest

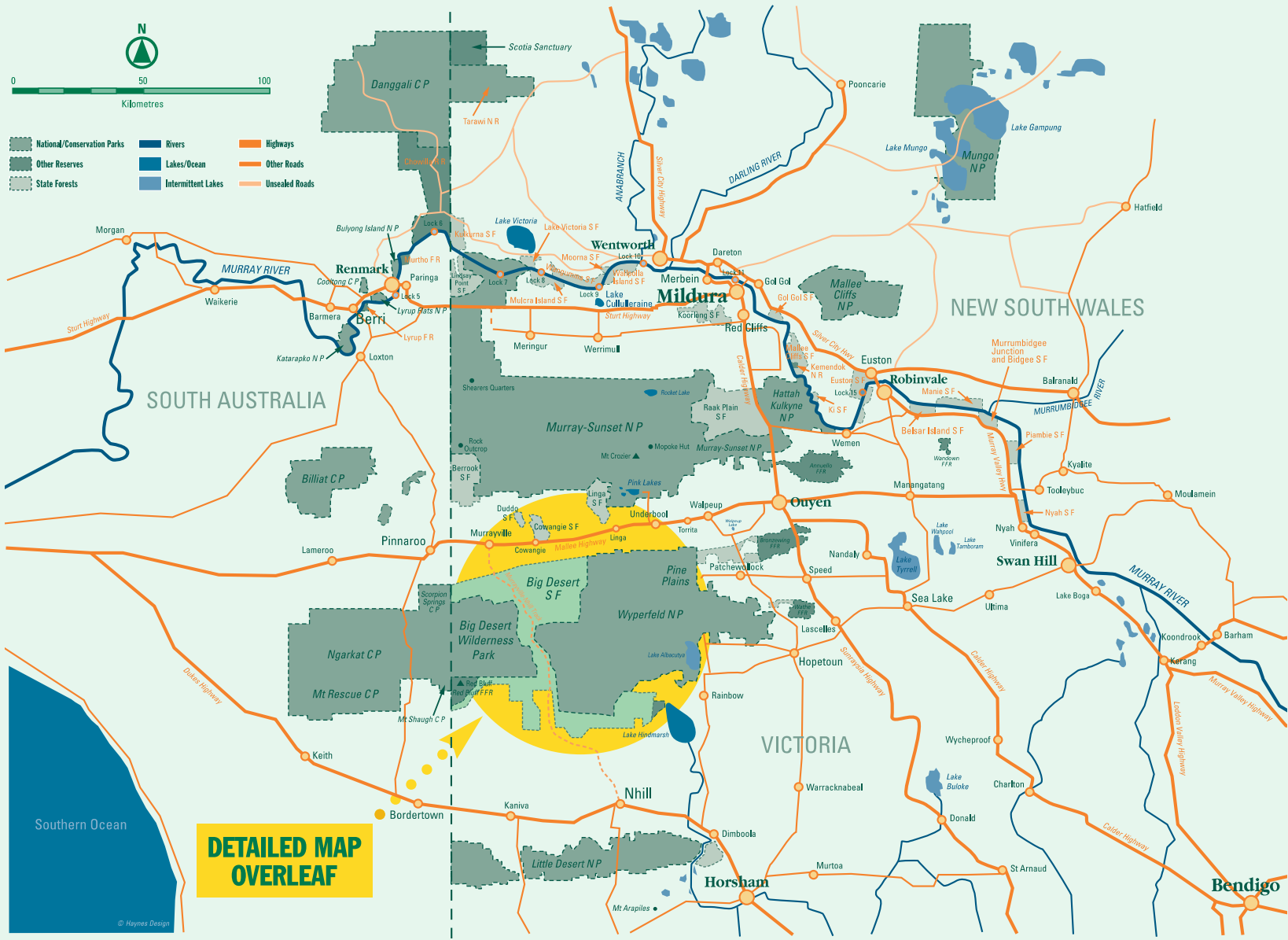
4WD TOURING MAP



Environment,
Land, Water
and Planning

FOREST FIRE
MANAGEMENT VICTORIA

Mallee State Forests & Parks



WILDERNESS AREAS

The Big Desert Wilderness Park preserves almost untouched Mallee landscape. Big Desert Wilderness Park, along with other wilderness zones in Wyperfeld National Park, offer secluded bushwalking trails and the opportunity to experience life in the wilderness.

Please note driving is prohibited in the Wilderness Areas. Camping is permitted however there are no facilities provided.

SERVICES & SUPPLIES

Murrayville is 33 kilometres north of Big Billy Bore and offers accommodation as well as emergency services.

Pinnaroo is approximately 60 kilometres north-west of Big Billy Bore via Murrayville. It is a larger township than Murrayville and offers visitors accommodation and fuel.

Nhill is 138 kilometres south of Big Billy Bore and offers visitors accommodation and fuel.



MORE TO EXPLORE APP

Download the More to Explore App for comprehensive information and interactive maps on what to see and do in Victoria's three million hectares of state forest. www.ffm.vic.gov.au/more-to-explore

In case of an emergency, call 000. Parks and state forests will be closed on Code Red Fire Danger days. For the latest emergency information, download the VicEmergency App.

NO FIRES ON DAYS OF TOTAL FIRE BAN

TRADITIONAL OWNERS

Forest Fire Management Victoria (FFMVic) acknowledges the Traditional Owners of the Big Desert area – the Wotjobaluk, Jaadwa, Jadawadjali, Wergaia and Jupagalk peoples. Through their cultural traditions, Aboriginal people maintain their connection to their ancestral lands and waters, which stretches back over many tens of thousands of years. The soaks and springs in the area were a valuable resource supporting agriculture, trade and habitation.

The Traditional Owners are represented by the Barengi Gadjin Land Council, who were recognised in a 2005 Native Title Consent Determination. As part of this Determination, there is a suite of Settlement Agreements which recognises the rights, interests and contribution of knowledge from the Wotjobaluk Nations into the management of this area.

HISTORY OF THE BIG DESERT BORES

Big Billy Bore was first installed in the 1800s and was used by stockmen to water their stock as they drove them from Nhill Station to Kow Plains Station. The original track went from this point through to Mountain Pine and the back of Cowangie. The original bore had a hand pump. The existing bore was sunk in 1912 and is 73.15 metres deep. Many of the other old bores along the track were sunk by the government to make water available to the Murrayville farmers who ran sheep in the drought years in the desert. These bores included Cactus Bore, John's Bore, and Sim Perry's hand pump. W. Chatterton, R. Forsyth and J. Ireland were some of the local contractors who sunk these bores in 1928.

The Big Billy Bore and Windmill were refurbished in 2016 by FFMVic. New bore casing was installed to 69.3 metres and the static water level measured at 22.7 metres below surface level. The water contains many natural minerals however it is not compliant under the Victorian *Safe Drinking Water Act* 2003 and should not be consumed.

FURTHER INFORMATION

Phone: 136 186
www.ffm.vic.gov.au

Disclaimer

This publication may be of assistance to you but the State of Victoria and its officers do not guarantee that the publication is without flaw of any kind or is wholly appropriate for your particular purpose and therefore disclaims all liability for any error, loss or other consequences which may arise from you relying on any information in this publication.



NO FIRES ON DAYS OF TOTAL FIRE BAN

Environment,
Land, Water
and Planning

FOREST FIRE
MANAGEMENT VICTORIA

Authorised by the Victorian Government,
Cnr of Koorlong Avenue and Eleventh Street Ilymple
Produced - June 2019

Wyperfeld National Park continues beyond this point. Refer to local maps & visitor information boards.